

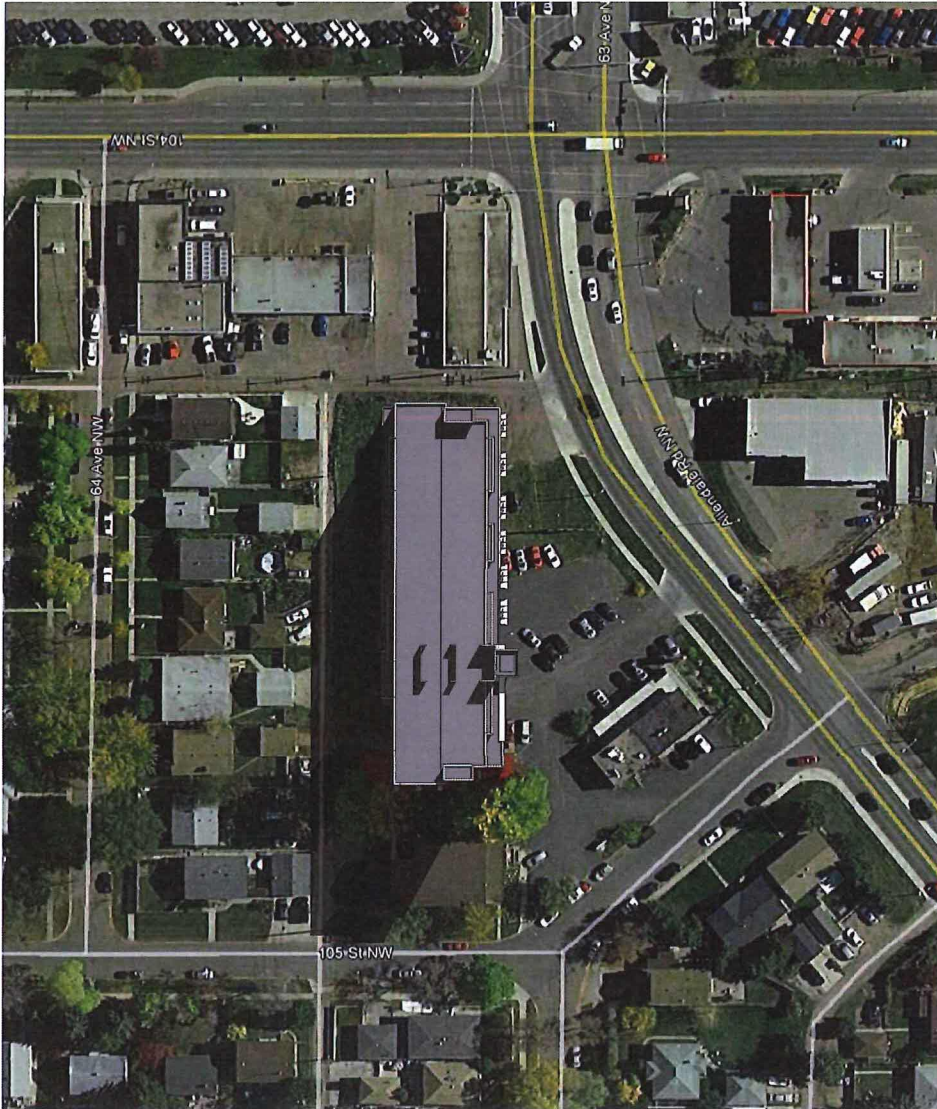


RECEIVED

APR 07 2017

SUBDIVISION AND
DEVELOPMENT
APPEAL BOARD

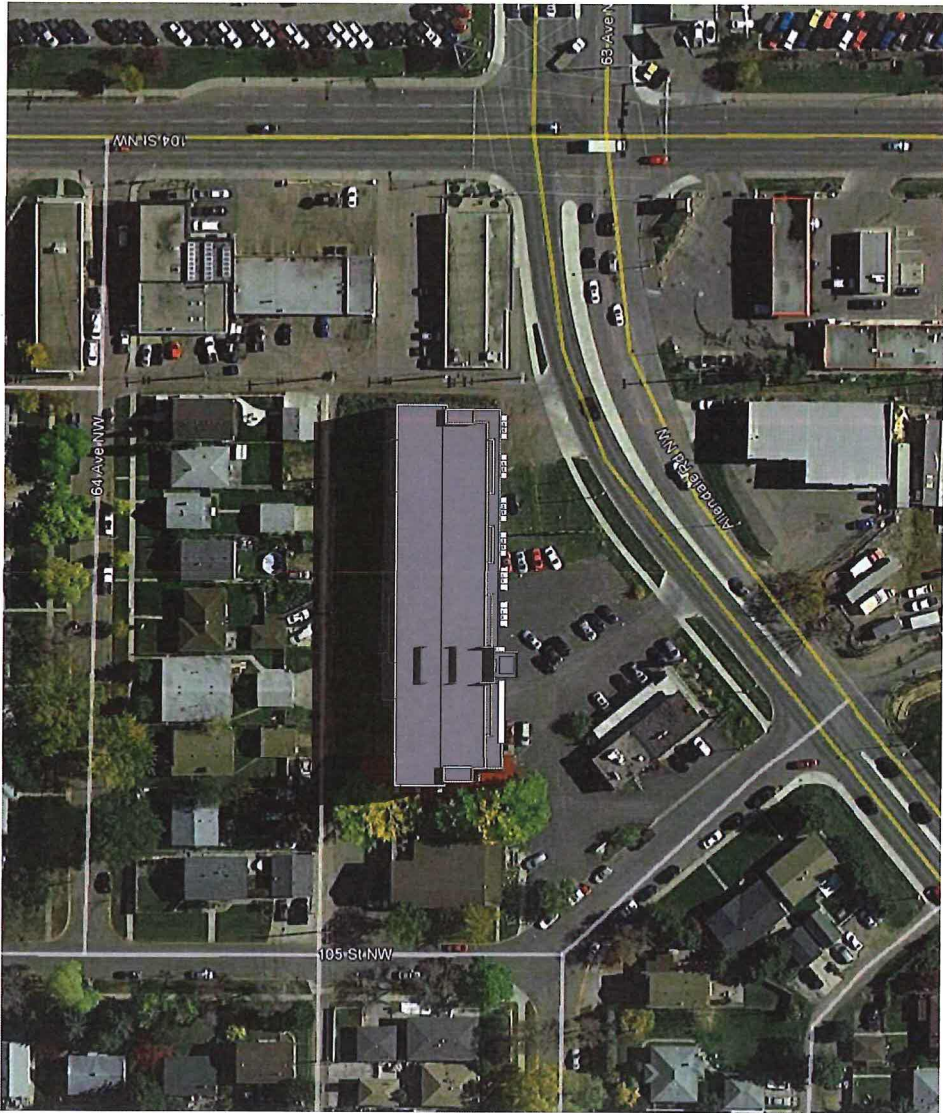
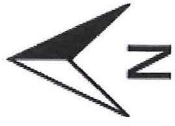
2016.09.15



1 MARCH 21 9 am
KUMAR 1:00

**Kumar
Architecture Ltd.**
1602, College Professional Plaza Building
8215-112 Street, Edmonton
AB, T6G 2C8
780-428-2752 (t)
780-428-2752 (f)
kumar@kumararchitecture.com
www.kumararchitecture.com



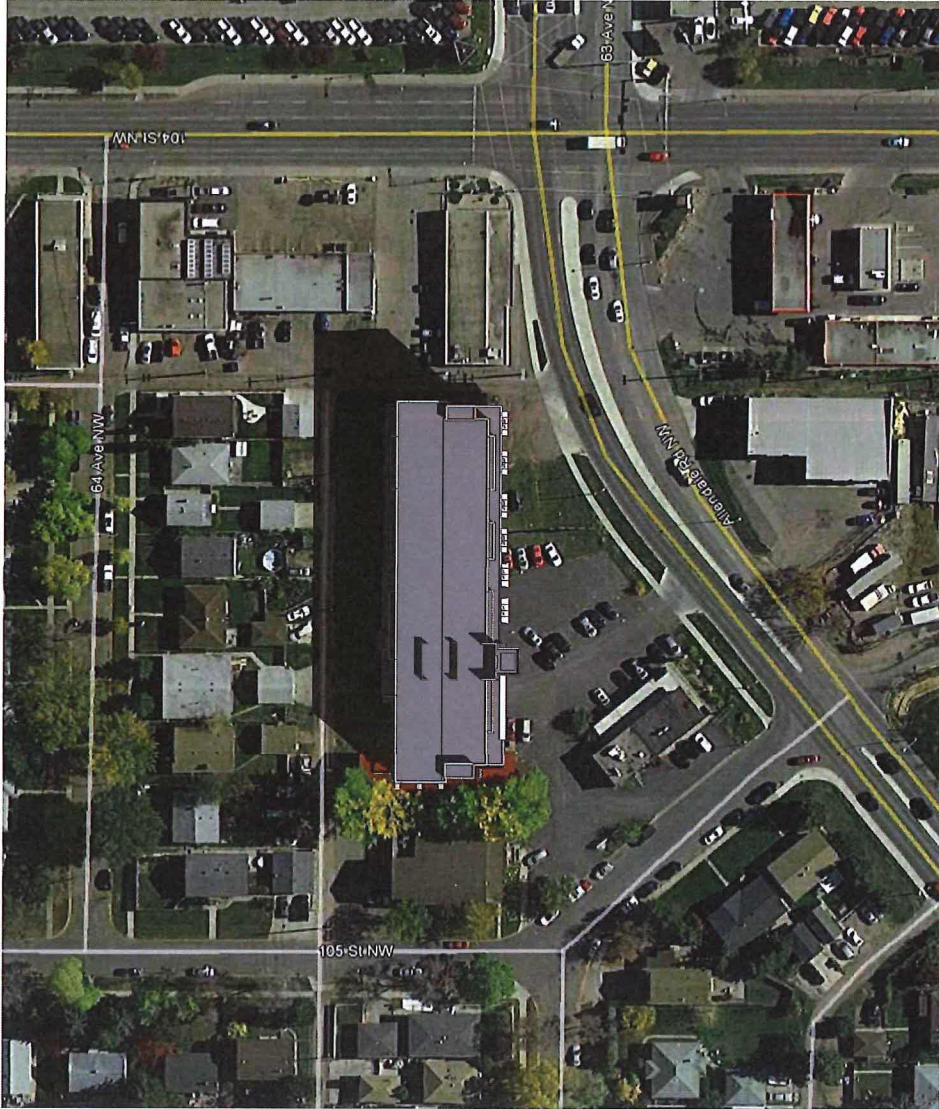
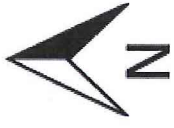


1 MARCH 21 12 pm
A0302 1:500

**Kumar
Architecture Ltd.**
1602, College Professional Plaza Building
8215-112 Street, Edmonton
AB, T6E 2C8
780-428-2752 (t)
780-428-2752 (f)
kumar@kumararchitecture.com
www.kumararchitecture.com



2016.09.15



1 MARCH 21 3 pm
MARCH 1 5:00

**Kumar
Architecture Ltd.**
1602 College Professional Plaza Building
8215-112 Street, Edmonton
AB, T6G 2C8
780-425-2752 (t)
780-425-2752 (f)
kumar@kumararchitecture.com
www.kumararchitecture.com



2016.09.15

